

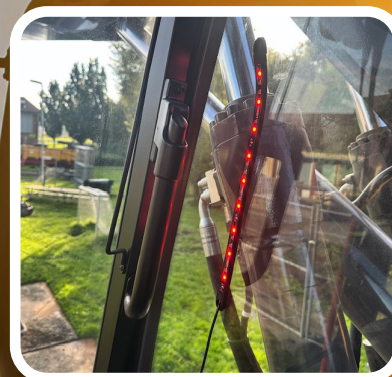
Skyddar på dagen - Vaktar på natten



A person approaches the machine from behind, the sensor detects the person by marking it with a red square.



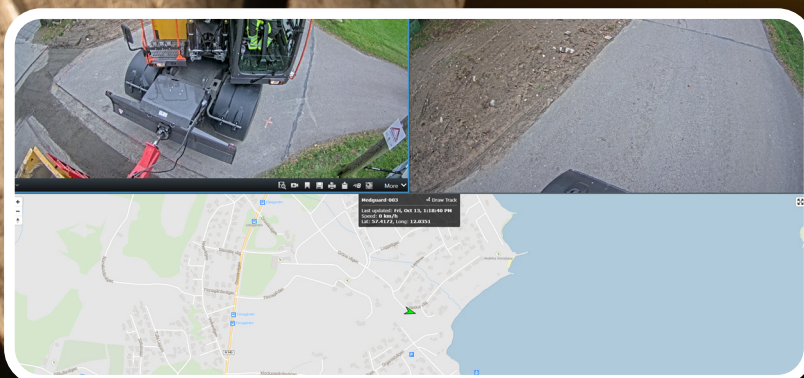
MEDguard warns the machine operator with a red light indication in the cabin as soon as the person approaches the machine from behind.



The red Led Indicator is placed within the driver's direct field of view. The goal is to warn and protect. MEDguard AI becomes your eyes in the back of your head!



Night time - MEDguard activates the light and siren alarm when a person approaches the parked machine and tries to access it. The camera starts recording and a message is sent to the app or directly to the alarm center.



Keep track of your machine. With MEDguard you are able to keep an eye on your machine at any time. The AI sensors give clear signals day and night. Furthermore you can get the precise GPS location on the map. It feels good to be in control!

M E D

guard

MEDIATEKNIK